

MALAYSIA NATIONAL HEALTH ACCOUNTS (MNHA) OVERVIEW

Dr. Maizura Musa

MNHA SEMINAR 2017

Hotel Bangi-Putrajaya

14 March 2017



CONTENTS

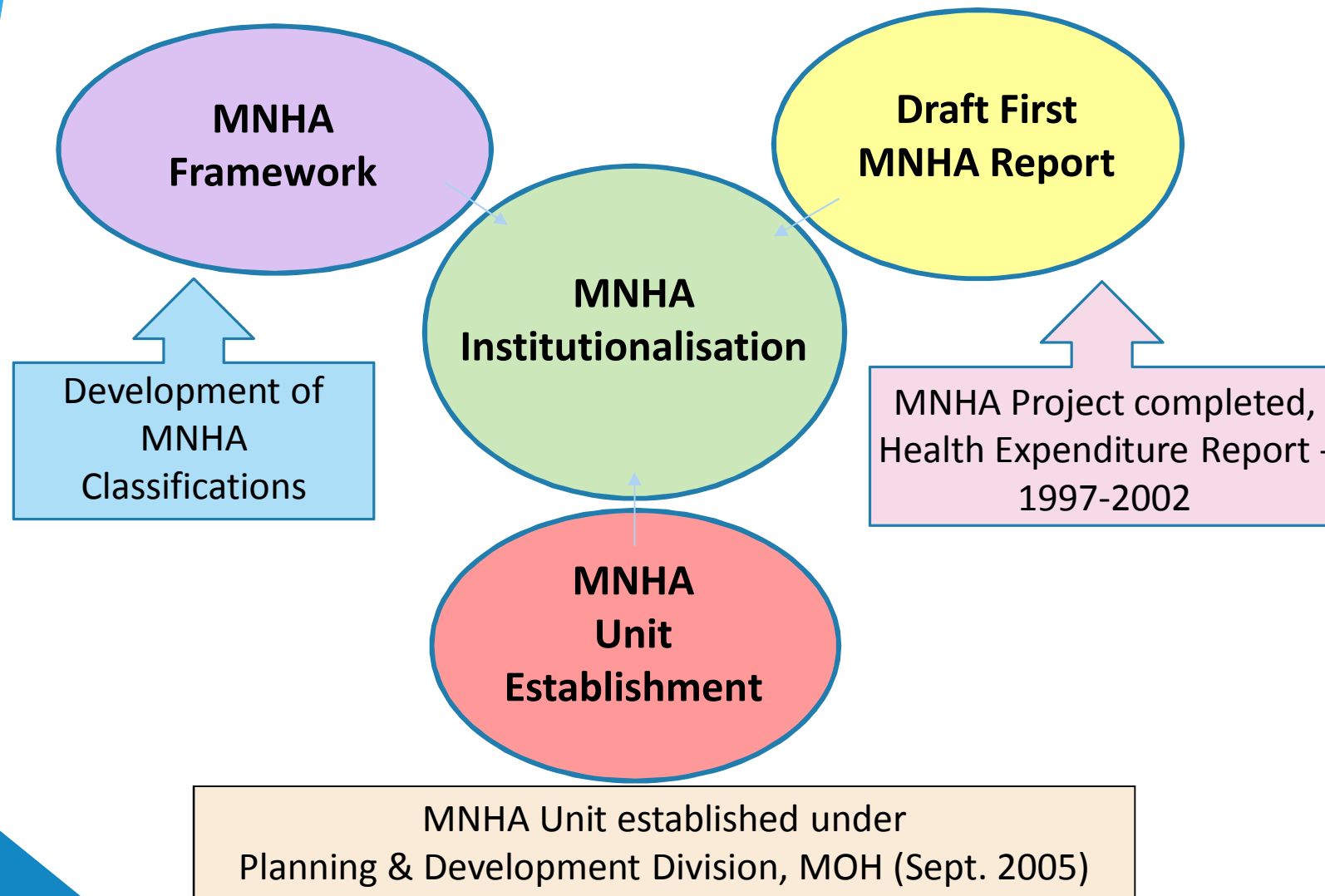
- “ Institutionalising MNHA
- “ MNHA Framework & Coding System



INSTITUTIONALISING MNHA

MNHA Unit, Planning Division, MOH - 2017

INSTITUTIONALISING MNHA



MNHA Unit, Planning Division, MOH - 2017

MNHA OBJECTIVES

“ Main Objective:

“ To provide a **planning tool** for the Malaysian government to ensure that funds are being used appropriately for the provision of a more equitable, accessible and effective health care system

“ Supporting Objectives:

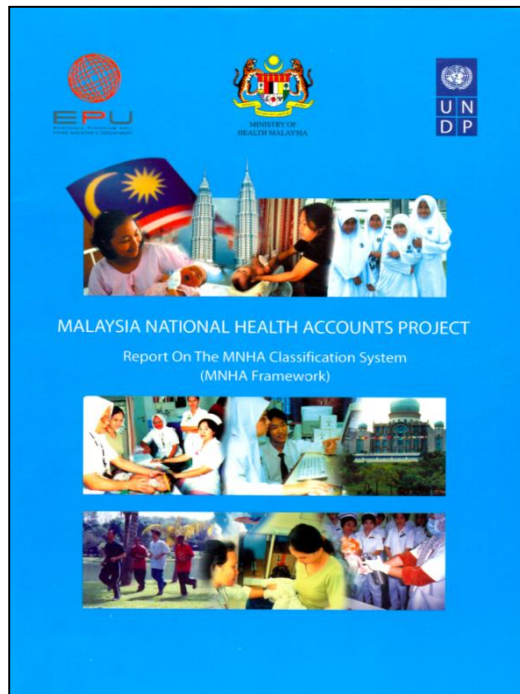
1. To **collect** and **analyse data on health expenditures** using the MNHA framework and produce **annual reports timely**
2. To build **strategic alliances with all the stakeholders** of health informatics from both the public and private sectors.



MNHA FRAMEWORK

MNHA Unit, Planning Division, MOH - 2017

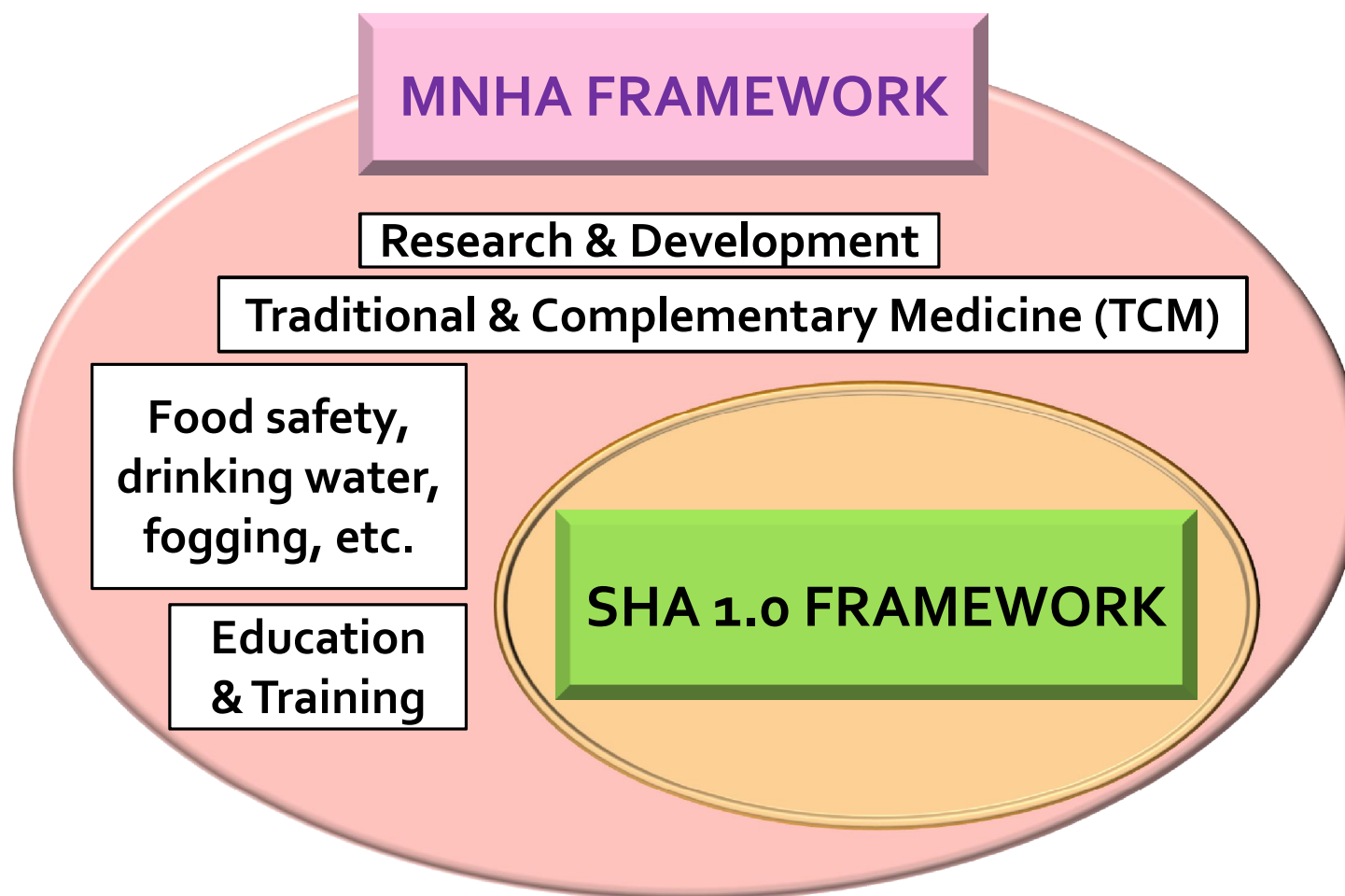
MNHA FRAMEWORK



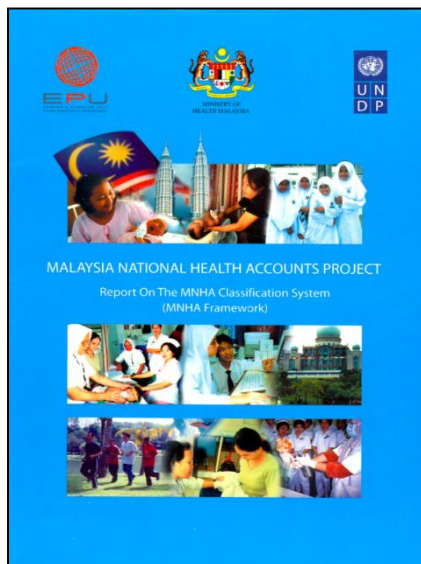
Malaysia National Health Accounts (MNHA) Framework

- “ Purpose: To track & report health expenditure flows under NHA in Malaysia
- “ Approved adaptation of System of Health Accounts 2000 (SHA 1.0) Framework

MNHA vs SHA FRAMEWORKS

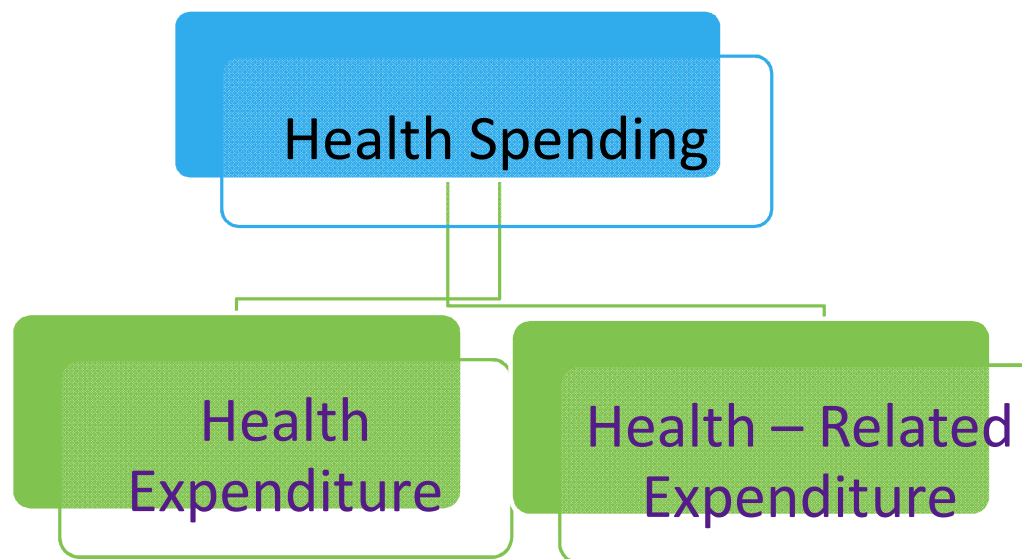


MNHA FRAMEWORK: HEALTH EXPENDITURE DEFINITION



MNHA Definition of Health Expenditure:

Spending for health and health-related activities, defined on the basis of primary or predominant purpose of improving health



MNHA CLASSIFICATION SCHEME (1)

- Expenditures are organised and measured based on:
 1. Entities financing the expenditures
 2. Provision or use of health services funded by these entities.
- **Three key dimensions** of analysis:
 1. Sources of Financing (**MS**)
 2. Providers of Health care (**MP**)
 3. Functions of Health care and health related functions (**MF**)

MNHA CLASSIFICATION SCHEME (2)

“ **MS** code - Sources of financing

Where does the money for health care services & products come from?

“ **MP** code – Providers of health care

*Who provides the health care services & products?
Where is the money spent?
Where do people seek treatment?*

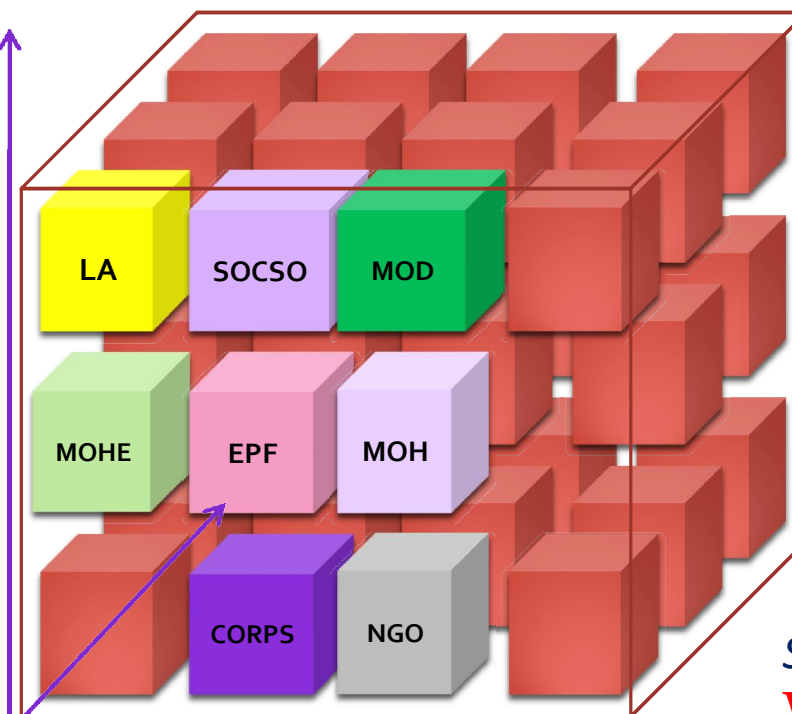
“ **MF** code - Functions of health care and health related functions

What type of health care services & products are purchased?

MNHA CLASSIFICATION SCHEME (3)

Provider
To Whom?

Function
For What?



For What

To Whom



Source
Who Pays?

MNHA Unit, Planning Division, MOH - 2017



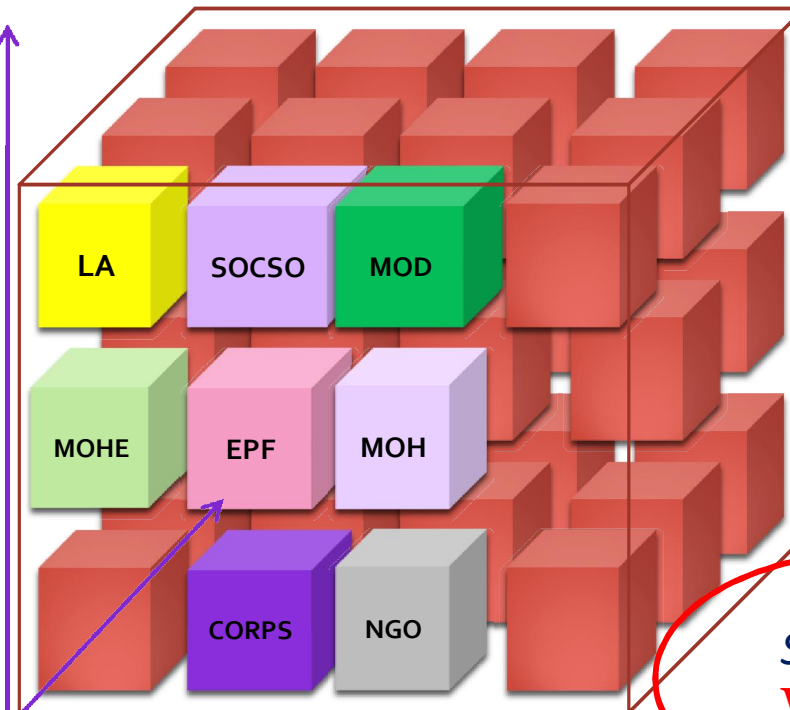
SOURCES OF FINANCING (MS)

MNHA Unit, Planning Division, MOH - 2017

MNHA CLASSIFICATION SCHEME

Provider
To Whom?

Function
For What?



For What

To Whom

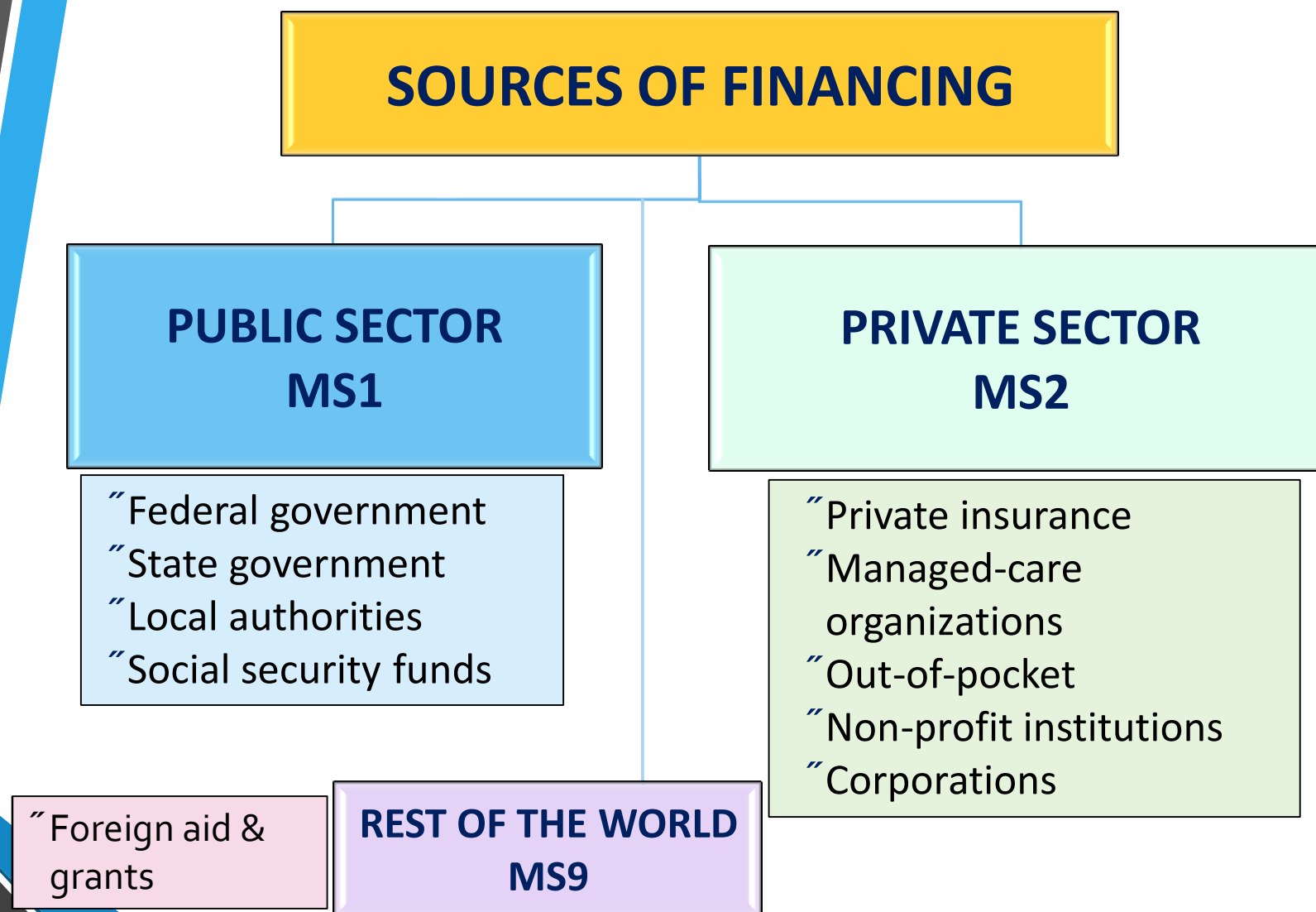
Source
Who Pays?

SOURCES OF FINANCING: DEFINITION

Definition:

“Entities that directly incur the expenditure and hence control and finance the amount of such expenditure”

SOURCES OF FINANCING: CLASSIFICATIONS

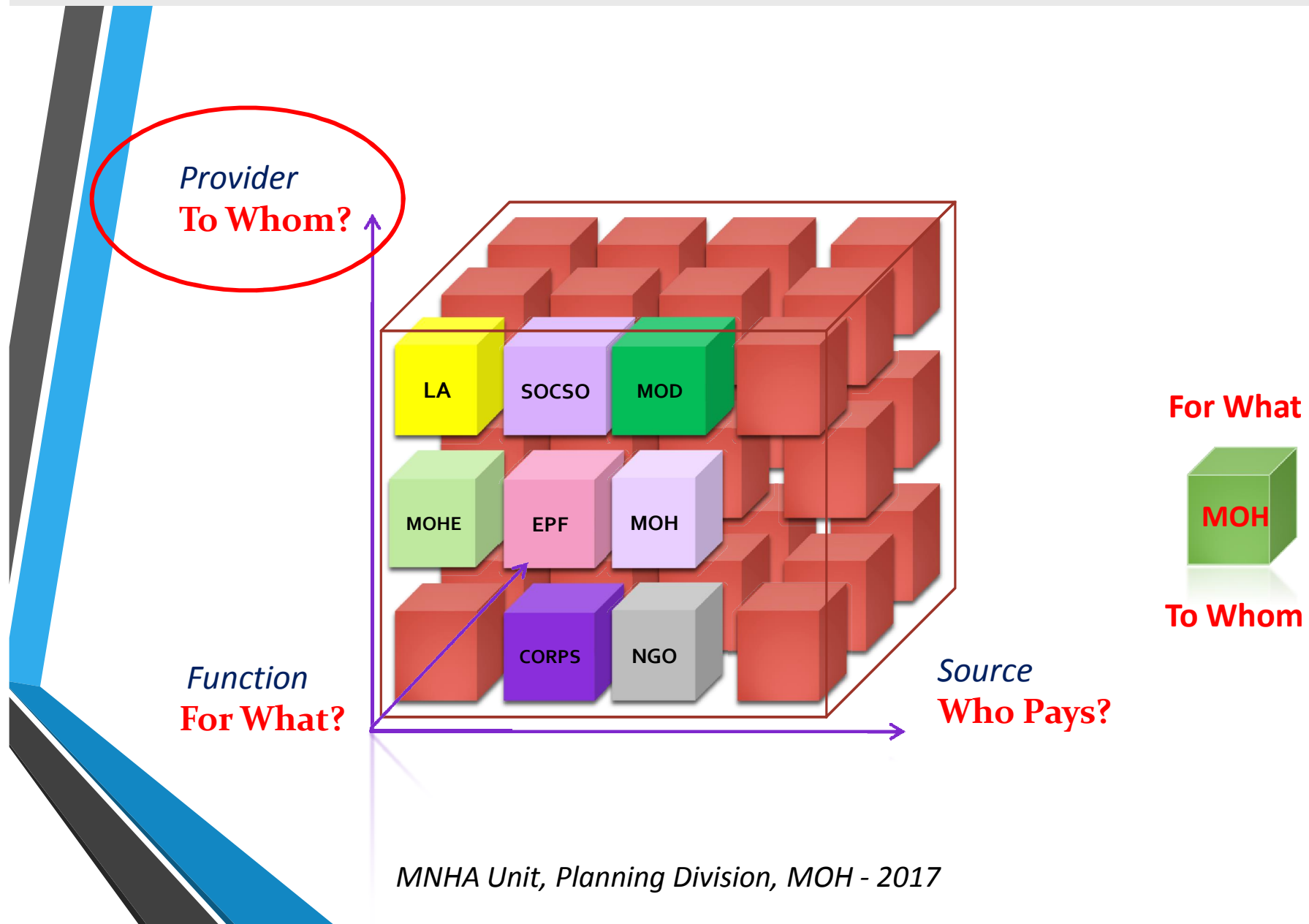




PROVIDERS OF HEALTHCARE (MP)

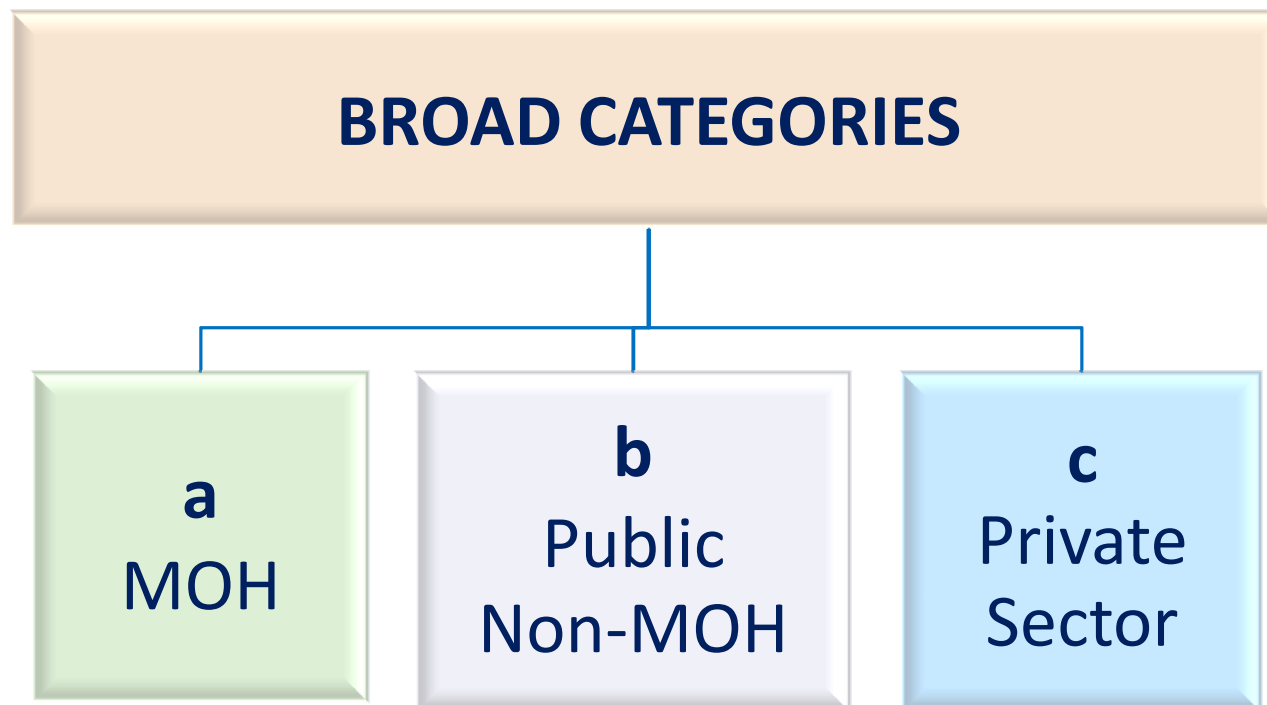
MNHA Unit, Planning Division, MOH - 2017

MNHA CLASSIFICATION SCHEME



PROVIDERS OF HEALTH CARE: DEFINITION & BROAD CATEGORIES

- Definition: “Entities that produce and provide health care goods and services, which benefits individuals or population groups”



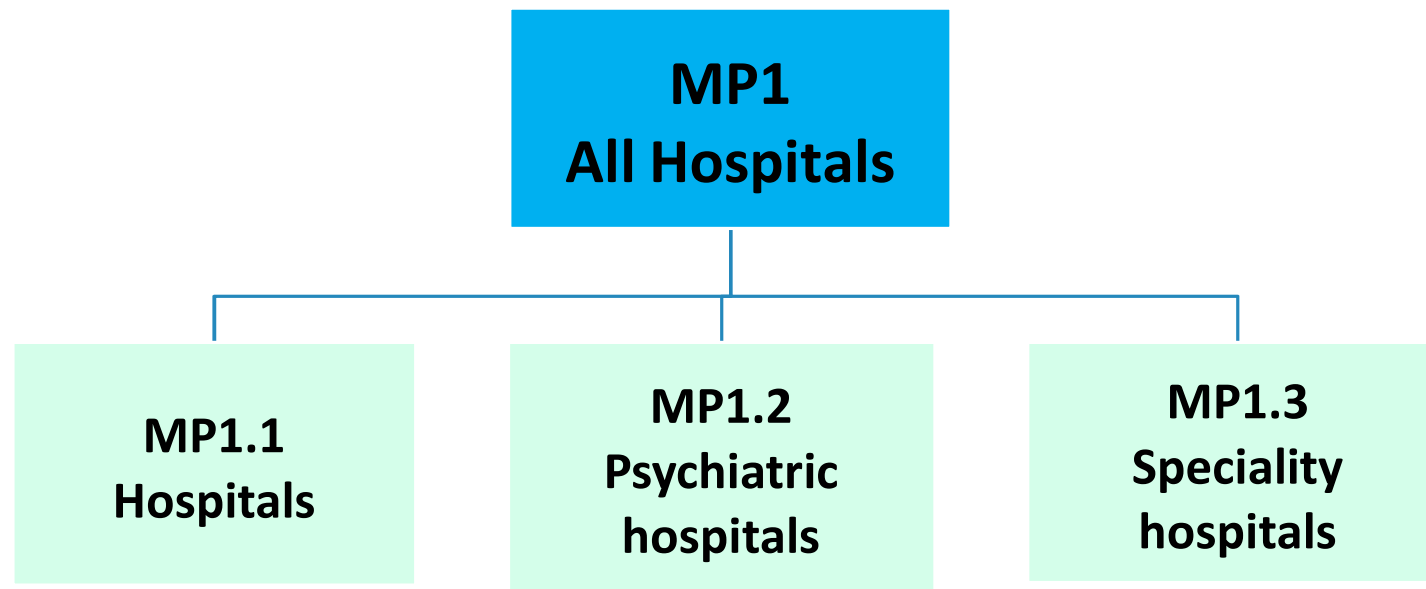
PROVIDERS OF HEALTH CARE: CLASSIFICATIONS

MP Classifications

MP1	All hospitals
MP2	Nursing and residential care facilities
MP3	Providers of ambulatory health care (non hospital setting)
MP4	Retail sale and other providers of medical goods
MP5	Provision and administration of public health programmes
MP6	General health administration and insurance
MP7	Other industries (rest of the Malaysia economy)
MP8	Institutions providing health related services
MP9	Rest of world

PROVIDERS OF HEALTH CARE: SUBCLASSIFICATIONS

MP Example: MP1 - All Hospitals





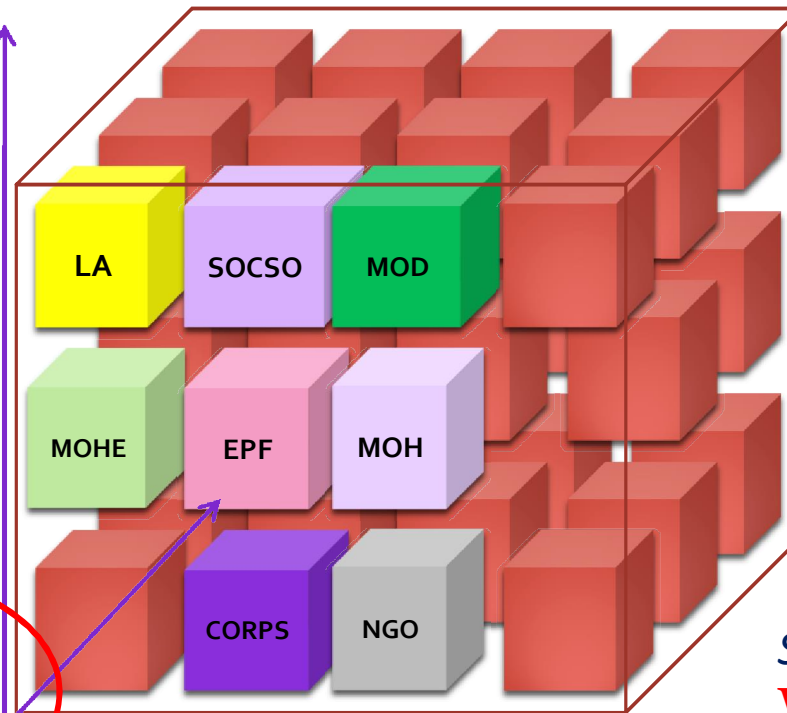
FUNCTIONS OF HEALTH CARE (MF)

MNHA Unit, Planning Division, MOH - 2017

MNHA CLASSIFICATION SCHEME

Provider
To Whom?

Function
For What?



For What

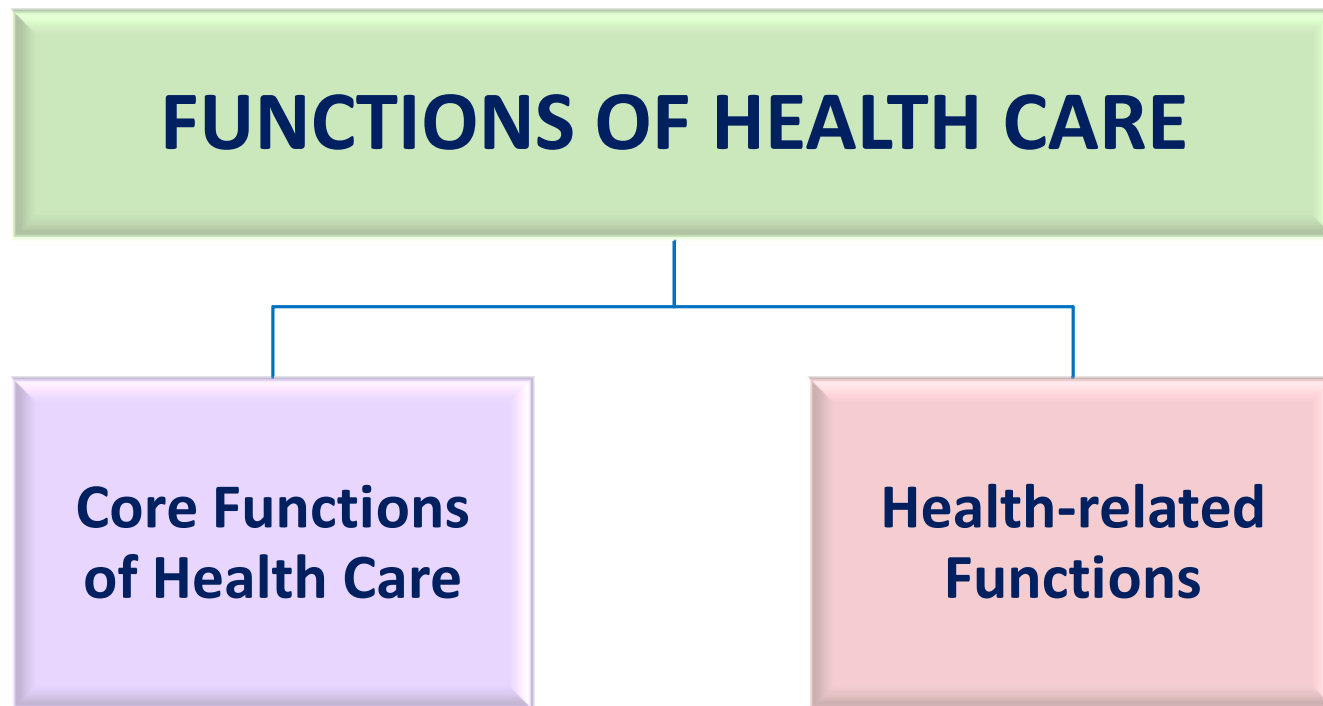


To Whom

Source
Who Pays?

MNHA Unit, Planning Division, MOH - 2017

FUNCTIONS OF HEALTHCARE: CATEGORIES



FUNCTIONS OF HEALTHCARE: CORE FUNCTIONS

MF Classifications

MF1	Services of curative care
MF2	Services of rehabilitative care
MF3	Services of long-term nursing care
MF4	Ancillary services to health care
MF5	Medical goods dispensed to outpatients
MF6	Public health services, including health promotion and prevention
MF7	Health administration and health insurance

FUNCTIONS OF HEALTH CARE: HEALTH-RELATED FUNCTIONS

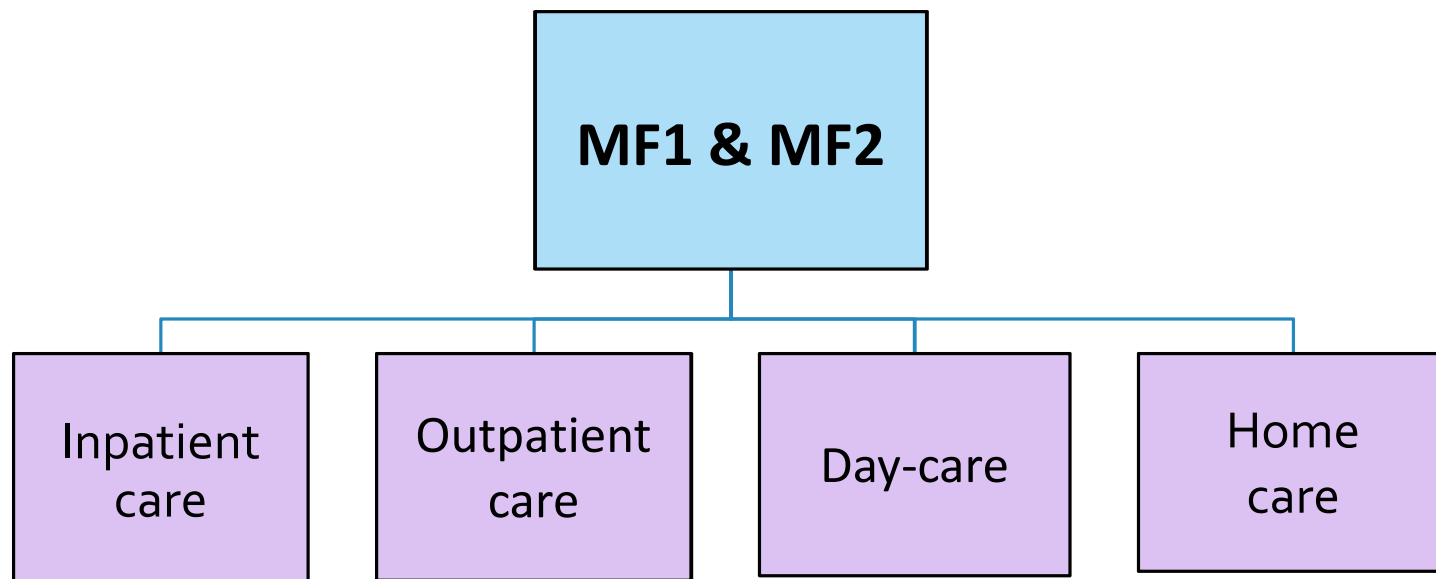
MR Classifications

MR1	Capital formation of health care provider institutions
MR2	Education and training of health personnel
MR3	Research and development in health
MR9	All other health-related expenditures

FUNCTIONS OF HEALTHCARE: CORE FUNCTIONS – MF1 & MF2

MF Example (1):

MF1 (Curative care) and MF2 (Services of Rehabilitative care) are further divided into 4 categories:



FUNCTIONS OF HEALTHCARE: CORE FUNCTIONS - MF4 & MF5

MF Examples (2):

MF4 Ancillary services to health care		
	MF4.1	Clinical laboratory
	MF4.2	Diagnostic imaging
	MF4.3	Patient transport and emergency rescue
	MF4.9	All other miscellaneous ancillary services

*MF4 comprises services provided by stand-alone centres

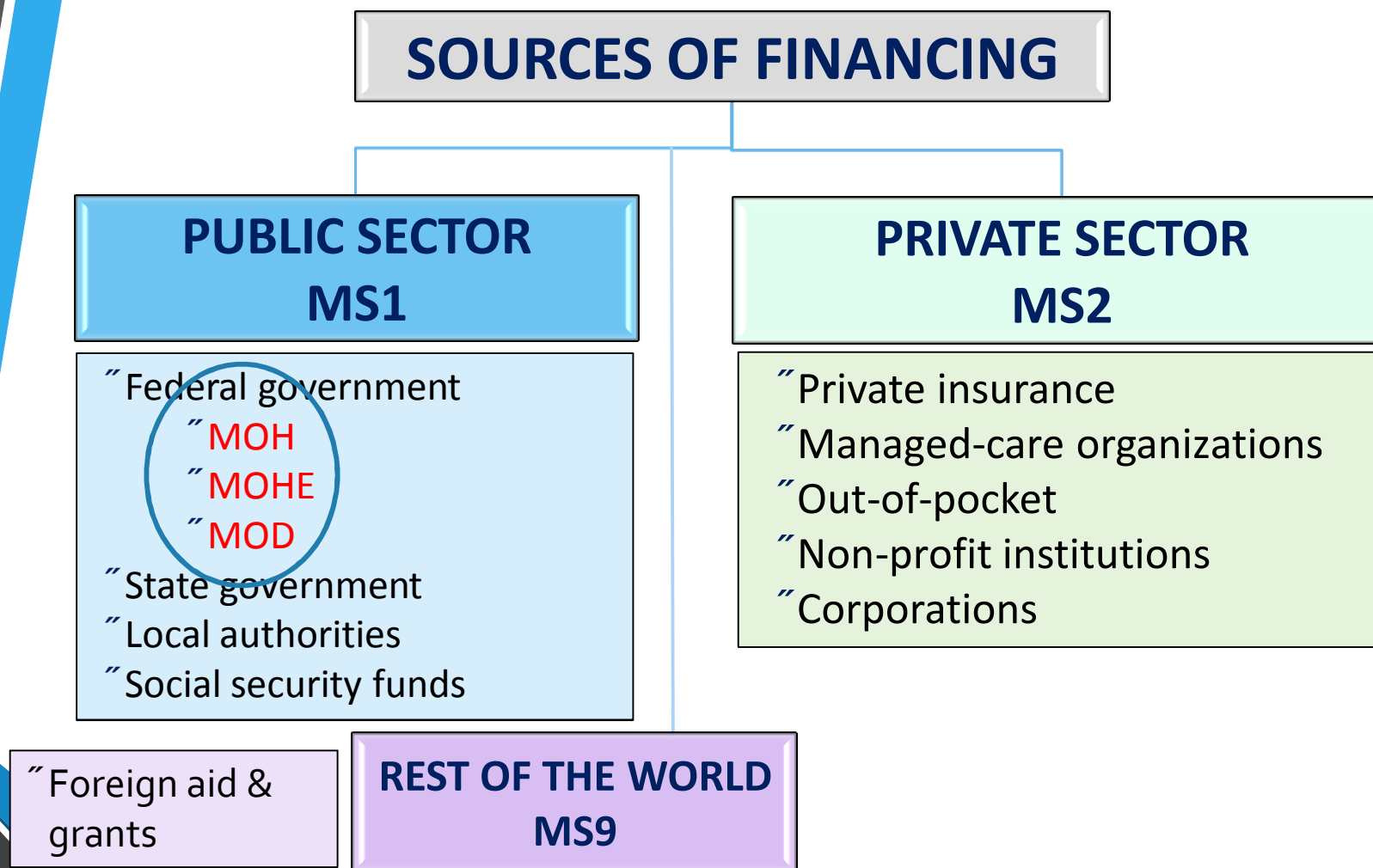
MF5 Medical goods dispensed to outpatient		
	MF5.1	Pharmaceuticals and other medical non-durables
	MF5.2	Therapeutic appliances and other medical durables



MNHA CODING SYSTEM

MNHA Unit, Planning Division, MOH - 2017

SOURCES OF FINANCING: CLASSIFICATIONS



MNHA VS SHA CODES (ICHA)

MNHA Source Code	MNHA Source Label	MNHA Source Database Code	ICHA Source code	ICHA Source Label	ICHA Source Database Code
MS1.1.1.1	Ministry of Health (MOH)	1111	HF.1.1.1	Central government	111
MS1.1.1.2	Ministry of Higher Education (MOHE)	1112	HF.1.1.1	Central government	111
MS1.1.1.3	Ministry of Defence (MOD)	1113	HF.1.1.1	Central government	111

SUMMARY

- **MNHA Institutionalisation:**
 - MNHA Framework
 - MNHA Unit establishment
 - Regular & timely National Health Expenditure reports
- **MNHA Framework & Coding System:**
 - **MNHA Classification Scheme** & is adaptation of SHA 1.0 Framework with minor modifications to suit local needs
 - **Three key dimensions and classifications:**
 1. **Source of Financing (MS)**
(Public sector, private sector, ROW)
 2. **Providers of Health Care (MP)**
(Public MOH, Public Non-MOH, Private)
 3. **Functions of Health & Health Related Functions (MF)**
(Core-functions & Health related functions)

~ END OF PRESENTATION ~

**THANK
YOU**